



# S2

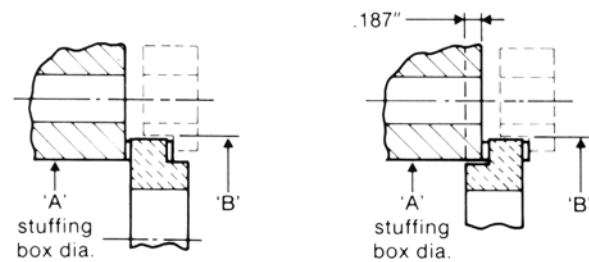


## Style 'L' Clamp Seat

The style 'L' clamp seat is available in 99.5% Alumina ceramic and solid silicon carbide and comes lapped both sides.

The seat sel-centers by piloting into the stuffing box. (ANSI sizes)

Standard gaskets are C.A.F.; P.T.F.E. gaskets are available on request.



INCH		
Shaft $\phi$	A $\phi$	B $\phi$
7/8	1.500	2.010
1	1.625	2.135
1 1/8	1.750	2.260
1 1/4	1.875	2.385
1 3/8	2.000	2.510
1 1/2	2.250	2.760
1 5/8	2.375	2.885
1 3/4	2.500	3.135
1 7/8	2.625	3.260
2	2.750	3.510
2 1/8	2.875	3.760
2 1/4	3.000	3.885
2 3/8	3.063	3.916
2 1/2	3.125	4.135
2 5/8	3.375	4.260
2 3/4	3.500	4.510
2 7/8	3.750	4.632
3	3.875	4.632
3 1/8	4.000	4.947
3 1/4	4.125	4.947
3 3/8	4.250	4.947
3 1/2	4.375	4.947
3 5/8	4.500	5.510
3 3/4	4.625	5.510
3 7/8	4.750	5.667
4	4.875	5.667

Disclaimer: The temperature limits, pH ranges, pressure ratings, feet per box and shaft speeds shown throughout this pamphlet are representative; the service life and performance of these products can be affected by elevated temperatures and other operating conditions such as chemical resistance, shaft speeds, pressure and equipment in which the product is being installed. The ratings supplied are suggested as a guideline and should only be used for evaluating your specific application. When in doubt, contact Robco or your ENVIROPAK distributor. *The information contained in the pamphlet should not be considered to be a warranty, expressed or implied, including, but not limited to, a warranty of merchantability or fitness for a particular purpose. In no event shall Robco be liable for any incidental or consequential damages resulting from the use, misuse or inability to use the products.* This exclusion applies regardless of whether such damages are sought based on breach of warranty, breach of contract, negligence, strict liability in tort, or any other legal theory.