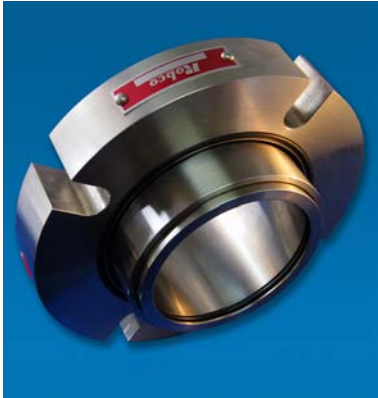




## ENVIRO I



**A pre-assembled, pre-set cartridge single seal for pumps, agitators, and mixers that can be serviced in your shop with a low cost infield repair kit. Takes the installation procedure from your hands to ours.**

### FEATURES AND BENEFITS:

- **EASY TO INSTALL**

No measuring is required to install the Enviro I cartridge seal.

- **NO SHAFT OR SLEEVE WEAR**

There are no dynamic “O” rings on the shaft to cause fretting to your equipment and the seal is designed so that all wear parts are disposable.

- **ALIGNMENT**

Stationary seats are resiliently mounted on an “O” ring and allowed to float for maximum face squareness.

- **IMPELLER ADJUSTMENT PUMPS**

The Enviro I can be installed on pumps requiring an impeller adjustment after the seal is installed. Adjustments can be made without removing the seal or dismantling the pump.

- **NO MODIFICATION TO EQUIPMENT**

The Enviro I low profile seal fits all ANSI pumps without modification and is superior in dimensional specifications to any other single cartridge seal commercially available.

- **API**

Given pump information the Enviro I can be manufactured to meet the American Petroleum Institute specifications for many petrochemical services.

- **3 WAY CLIPS**

A clip design that not only centers seal but stops axial movement in both directions.

- **“OFF THE SHELF” AVAILABILITY**

The Enviro I seal is available in 1” to 4”. Larger shaft diameters are available on request.

## FEATURES AND BENEFITS:

- **PRESSURE TESTED**

All Enviro I seals are pressure tested before leaving our factory.

- **INFIELD REPAIR KIT**

The Enviro I can be repaired by your maintenance man with our low cost repair kit.

Disclaimer: The temperature limits, pH ranges, pressure ratings, feet per box and shaft speeds shown throughout this pamphlet are representative; the service life and performance of these products can be affected by elevated temperatures and other operating conditions such as chemical resistance, shaft speeds, pressure and equipment in which that the product is being installed. The ratings supplied are suggested as a guideline and should only be used for evaluating your specific application. When in doubt, contact Robco or your ENVIROPAK distributor. *The information contained in the pamphlet should not be considered to be a warranty, expressed or implied, including, but not limited to, a warranty of merchantability or fitness for a particular purpose. In no event shall Robco be liable for any incidental or consequential damages resulting from the use, misuse or inability to use the products.* This exclusion applies regardless of whether such damages are sought based on breach of warranty, breach of contract, negligence, strict liability in tort, or any other legal theory.